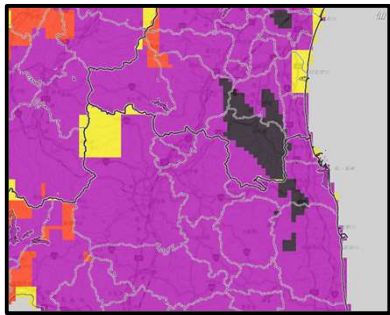


Let's check Real-time risk map (KIKIKURU) !



KIKIKURU Screen

Check the current risk level
Using **FIVE** color codes



The map shows possible risks.
Scan to view



高	Emergency	Level 5	Evacuate by Level 4!
危険度	High Risk	Level 4	
	Warning	Level 3	
	Advisory	Level 2	
低	Early Advisory	Level 1	

Important Information

Do not forget to share this with your family!

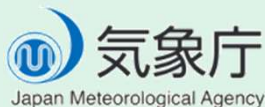
- Check hazardous areas near your home in advance using **hazard maps** or your **local government website**.
- When a disaster is expected, check updates using weather warnings and **KIKIKURU**. Follow your local government's **evacuation instructions** and take immediate action to stay safe.

Let's check disaster weather information on the Japan Meteorological Agency Website.



Scan for Website

Attention!



3-6-9 Toranomon, Minato City,
Tokyo 105-8431, Japan
TEL : 03-6758-3900
FAX : 03-3434-9086 (Accessible to people with hearing impairments)

Thanks to the **Nagasaki International Student Support Center** for their cooperation in translating this Japan Meteorological Agency leaflet into English.

Staying Safe During Heavy Rain Disasters

~Using Weather Warnings for Disaster Preparedness~

GUIDE BOOK

Harerun Quiz !

Weather warnings are color-coded.
Do you know which color tells everyone to evacuate immediately from dangerous areas?

①	②	③	④	⑤
しろ 白	き 黄	あか 赤	むらさき 紫	くろ 黒
White	Yellow	Red	Purple	Black



Harerun

(Japan Meteorological Agency Mascot)

Find the answer in this leaflet! ♪



NATURAL DISASTERS AROUND US



Let's Learn The 5 Alert Levels

River Flooding

Areas to avoid: **Near rivers**



Flooding may cover buildings and roads with water.

Heavy Rain

Areas to avoid: **Low-lying areas**



Places like underpasses and underground spaces may get flooded.

Landslide

Areas to avoid: **Near mountains and cliffs**



Mountains and slopes may collapse, causing soil and sand to flow downward.

Storm Surge

Areas to avoid: **Coastal areas**



When typhoons approach, sea levels may rise and water may flow onto land.

How to evacuate



■ Move to a safe place before a disaster happens.



■ If it is difficult to evacuate from your home,
 1. Landslides : Move to a room away from mountains and steep slopes.
 2. Flooding, heavy rain, or storm surge : Move to higher ground as much as possible.

To evacuate quickly, please check hazard maps in advance to understand where disasters may occur.

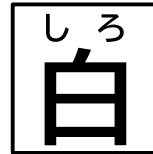


Check the hazard map here.

Weather Warnings on flooding, heavy rain, landslides, and storm surges are shown by colors and levels to indicate the degree of danger.



White



Level 1: Early Advisory

Pay attention to upcoming information.



Yellow



Level 2: Advisory

Talk with your family about the dangers of a warning and how to evacuate safely.



Red



Level 3: Warning

People who take longer to evacuate (e.g., elderly) should start evacuating early.



Purple



Level 4: Urgent Warning

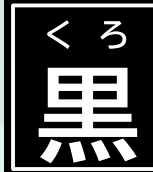
A disaster could happen at any time. Evacuate immediately from dangerous areas.

Quiz!
Answer
④



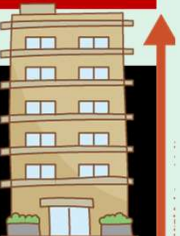
Don't wait any longer, evacuate immediately

Black



Level 5: Emergency Warning

Flooding or landslides may already be occurring. Evacuate immediately to any safer location.



Move away from slopes! Go to higher ground inside the building!