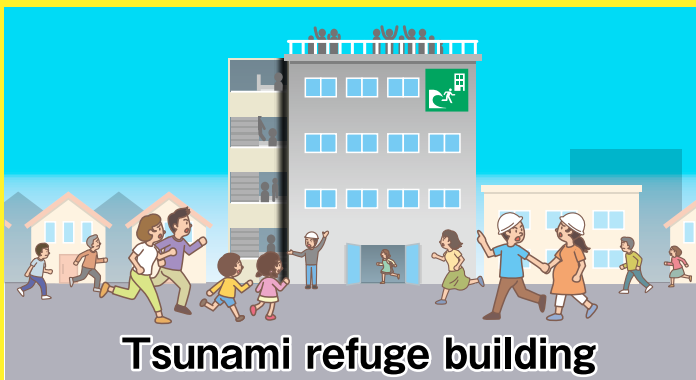


■ Staff waving tsunami flags will also evacuate promptly.

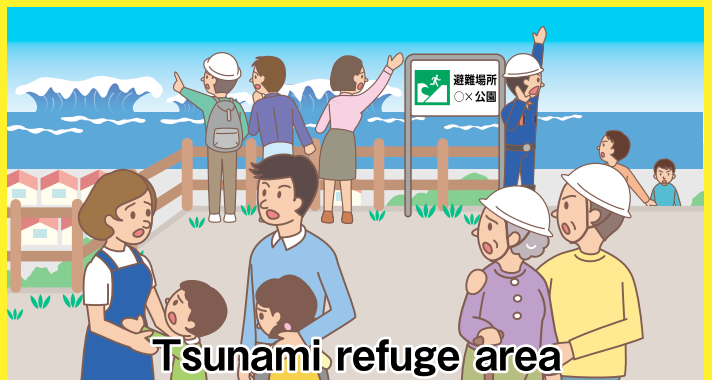


# Earthquake! Tsunami! Evacuate immediately!

**Keep moving to the highest ground possible!**

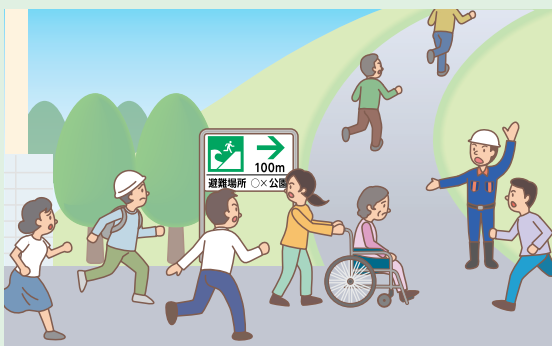


**Tsunami refuge building**



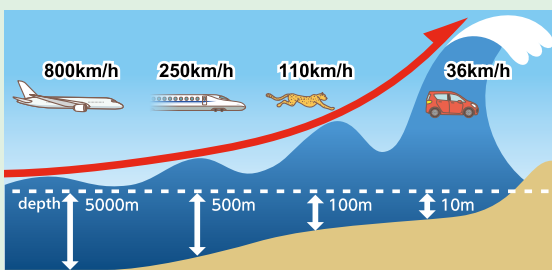
**Tsunami refuge area**

**Evacuate immediately to a safe place (such as high ground or an evacuation building) if you feel shaking in coastal regions or hear a Tsunami Warning.**



Evacuate **on foot** to avoid/prevent traffic jams.

Get the right information from TV, radio or a mobile phone.



If you see a tsunami, it's already too late to evacuate.

Huge tsunamis can strike even in the absence of shaking.

## Evacuate to **a tsunami safety area!**

People in coastal or riverside areas should check the locations of **tsunami evacuation areas** and **evacuation buildings** on local government **tsunami hazard maps** in advance. Consider evacuation routes and interaction with local residents.



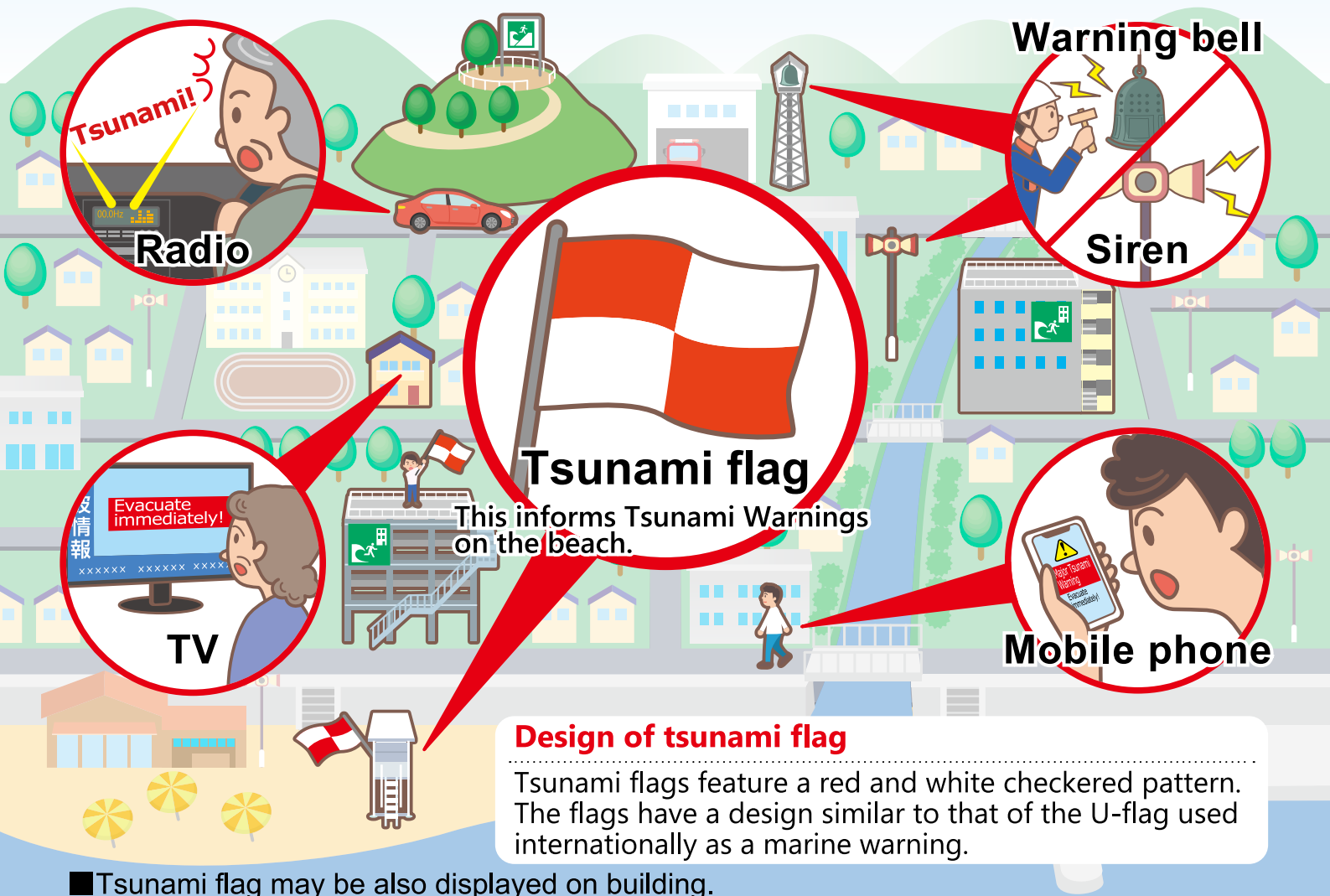
# Tsunami Warnings

## How to know Tsunami Warnings

\*Tsunami Warnings means Major Tsunami Warning, Tsunami Warning and Tsunami Advisory.

Tsunami Warnings\* can come from TV, radio, mobile phone and tsunami flag.

If you see **tsunami flag** in coastal regions, evacuate immediately to a safer place.

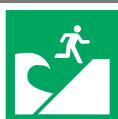


Categories		Tsunami Advisory	Tsunami Warning	Major Tsunami Warning		
Estimated maximum tsunami heights in Tsunami Information	Qualitative expression	(no expression)	High	Huge		
	Quantitative expression	1m (0.2m-1m)	3m (1m-3m)	5m (3m-5m)	10m (5m-10m)	over 10m (10m- )

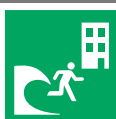
Tsunami waves are expected to hit repeatedly. Do not leave safe ground until the warning is lifted.

**Never return to a coastal area while a Tsunami Warning is in effect!**

This indicates a SAFE refuge from tsunami.



Tsunami refuge area



Tsunami refuge building

This indicates a DANGER of tsunami.



Tsunami hazard zone

This indicates TSUNAMI WARNINGS are issued.



Tsunami flag



Director for Research and Planning,  
Director General for Disaster Management



1-6-1 Nagata-cho, Chiyoda-ku, Tokyo 100-8914, Japan.

TEL : 03-5253-2111

Website URL : <http://www.bousai.go.jp/index-e.html>



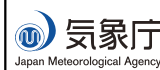
Disaster Management  
Division,  
Civil Protection and  
Disaster Management  
Department



2-1-2 Kasumigaseki, Chiyoda-ku, Tokyo 100-8927, Japan.

TEL : 03-5253-5111

Website URL : <https://www.fdma.go.jp/en/post1.html>



Office of Earthquake and  
Tsunami Disaster Mitigation,  
Earthquake and Tsunami  
Observation Division,  
Seismology and Volcanology  
Department



3-6-9 Toranomon, Minato City, Tokyo 105-8431, Japan.

TEL : 03-6758-3900

Website URL : <https://www.jma.go.jp/jma/indexe.html>