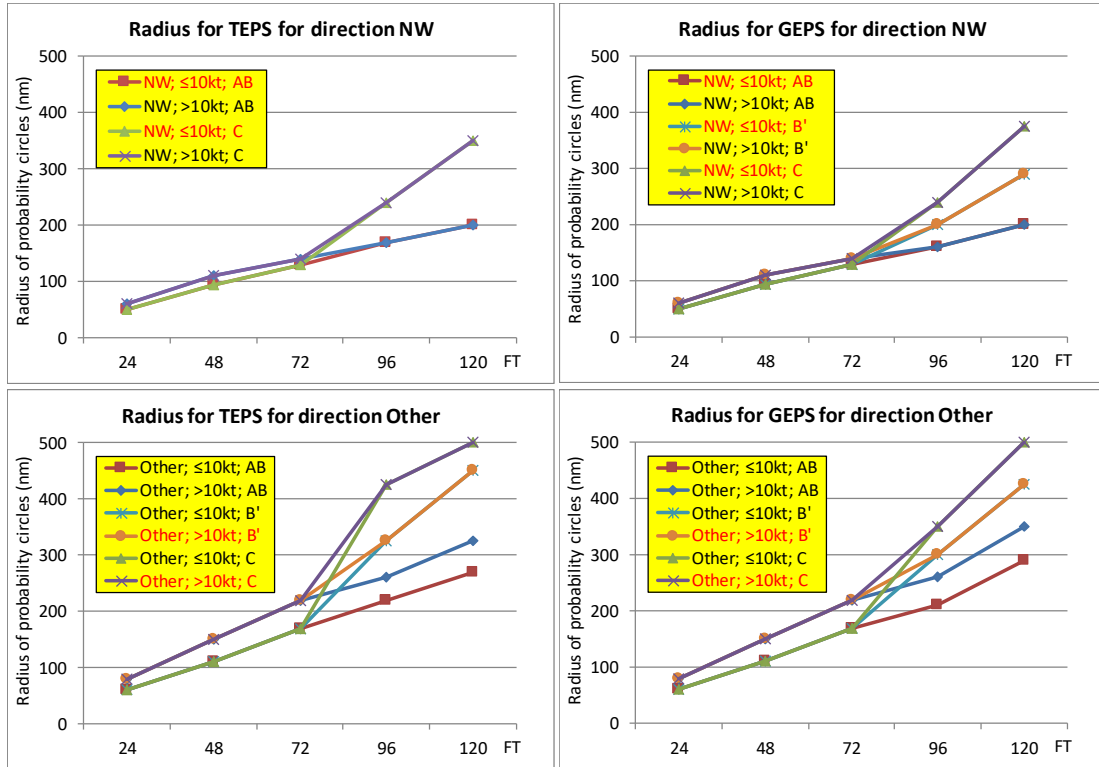


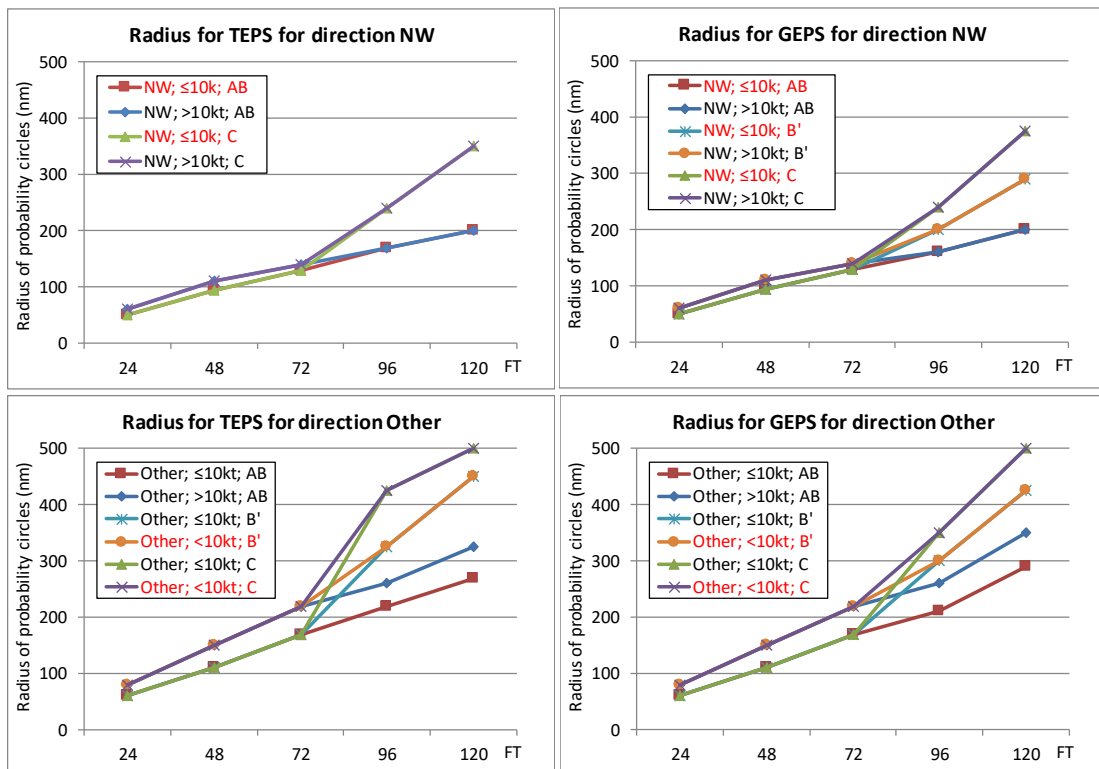
2.5.2 Update of Forecast Circle Radii based on GEPS

p.9 Figure 2.2

(correct)



(incorrect)



4.2.2 GEPS Prediction

2) Spread-Skill Relationship

p.24 Table 4.7

(correct)

Time	Reliability Index					
	A		B		C	
T=30	88.3	(137)	112.1	(136)	129.9	(155)
T=54	152.4	(127)	190.1	(99)	240.4	(96)
T=78	272.6	(96)	271.0	(78)	402.6	(56)
T=102	381.5	(71)	397.9	(68)	639.0	(27)
T=126	471.1	(57)	525.6	(49)	916.1	(14)

(incorrect)

Time	Reliability Index					
	A		B		C	
T=30	88.3	(131)	112.1	(176)	129.9	(244)
T=54	152.4	(127)	190.1	(99)	240.4	(96)
T=78	272.6	(96)	271.0	(78)	402.6	(56)
T=102	381.5	(71)	397.9	(68)	639.0	(27)
T=126	471.1	(57)	525.6	(49)	916.1	(14)