

DGCA Met department

Logo

Basic Climatological Station Metadata

Current Status (draft in word by gjh, 28.01.09, DGCA to complete all areas highlighted in yellow color)

Metadata compiled: 2009

Station: Kuwait City

WMO number: 40581

Internal Station number: same as WMO number,
historic AWOS documents refer to the station as A19

ICAO Identification: n/a

Network Classification: CLIMAT station

Purpose: Climate

Date opened: 2006

Status: Open

Manufacturer: Almos Pty Ltd

Current Station Location					
(Brass mark at or near Data Collection Unit (refer to site layout included))					
Longitude	Decimal	47 59' 48 "E	Hour Min Sec		
Latitude	Decimal	29 22' 43"N	Hour Min Sec		
UTM WGS84 – Zone 38	Easting (m)				
	Northing (m)				
Station Height:	54.11m (PWD)	Barometer Height:	n/a (msl)	Tide gauge height:	n/a (m ISLW)
Method of geographic positioning	Surveyed against geographical reference points using differential GPS triangulation methods, accuracy: mm horizontally and vertically				

Station Summary:

Location in Almaqwaa Yard – PAAAFR - Kuwait City .

Observation Summary:

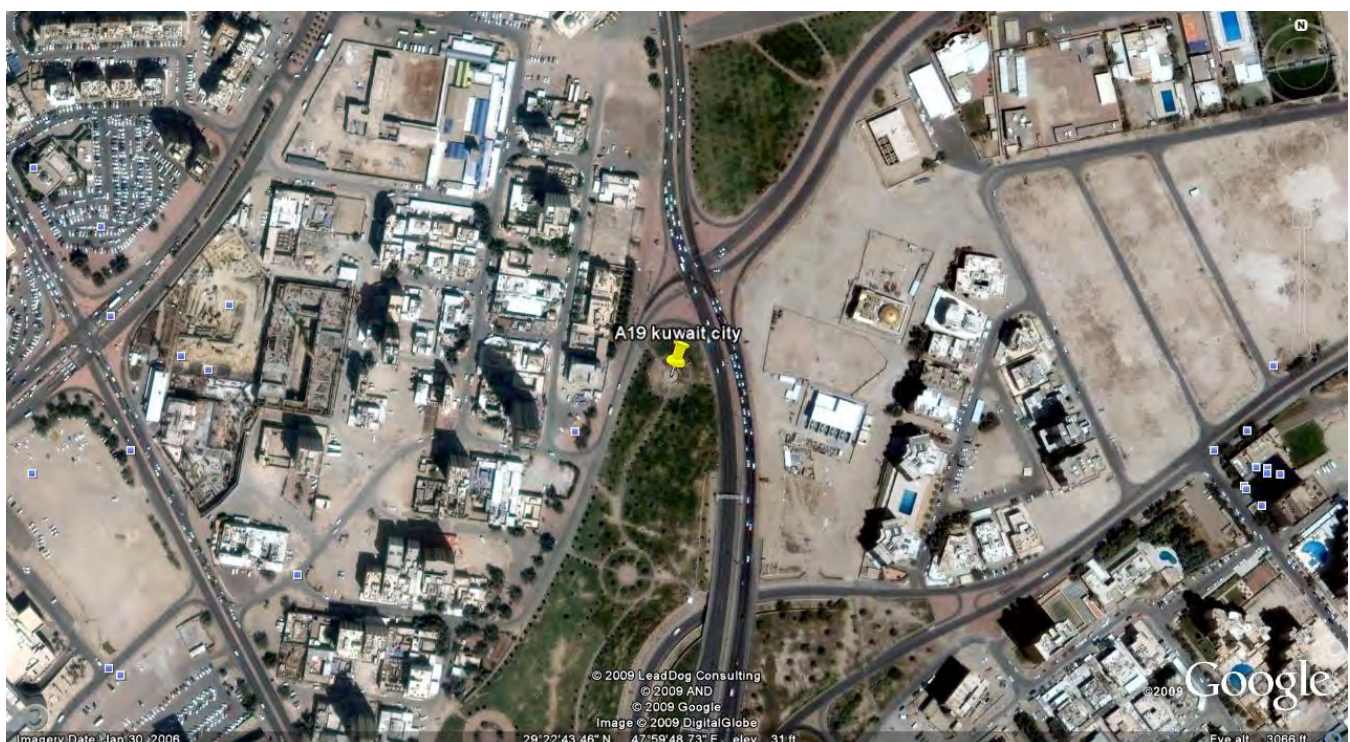
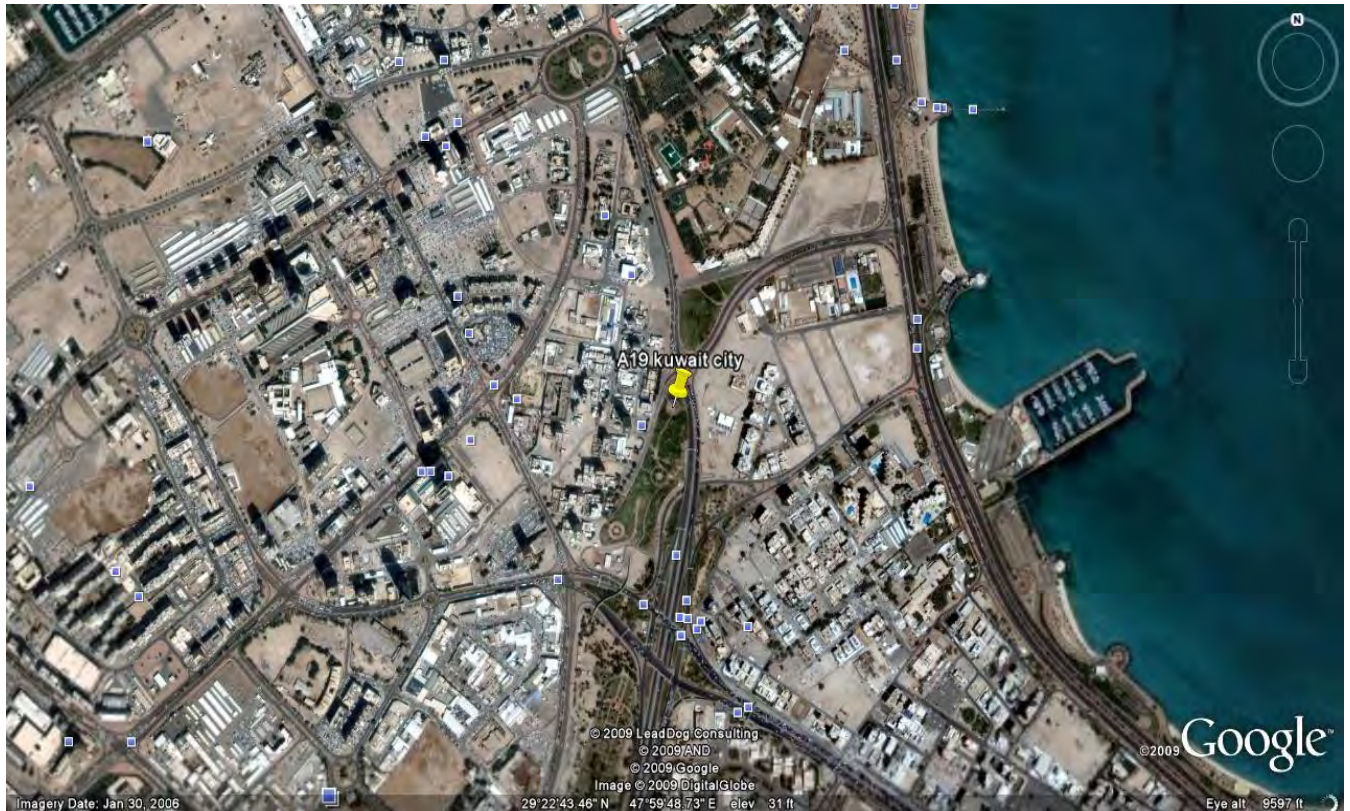
to be generated by climatological staff from CDMS statistics – daily and hourly station
holdings graphs to be provided .

DGCA Met department

Logo

Site location:

Top views generated Google Earth in January 2009



/Users/EssaRamadan/Desktop/Japan Workshop/AWOS META DATA/(A19) Kuwait City – 40581.docx



DGCA Met department

Logo

Site photographs:

Date (take from as-built or metadata DVD)



Rain - Weighing Type
Model : Rimco 8500



AIR Temperature & Humidity (AT RH)
Model : HMP45D



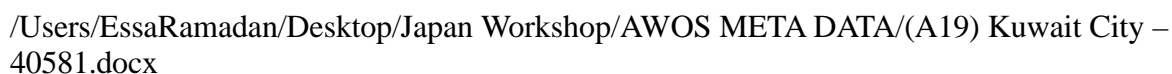
Solar Panel

DGCA Met department
Logo

Views of station vicinity to the North, South, West, East not available at the moment at Minagish station .









Site layout (as-built, NTS) :

Station: Kuwait City

Station Observation Program Summary :

Automatic station reporting in 1 minute intervals of actual values for all elements as specified below. No observer at the station.

Current Station Equipment Summary

Infrastructure:

Mast Anemometer: Pivot, 10m, aluminium lattice

Rain gauge: 60mm support ensuring top of rain gauge 1m above ground level

Air temp.: mounted to the wind tower using a crossarm ensuring the center of the sensor shade is mounted in 2m height above ground level

Sensors actually in use:

Element	Sensor type and make	Serial number
Temperature& Humidity (AT RH)	Vaisala	A2920047
Wind Speed and Direction + Clamp	Vaisala,	A3420029
Rain - Tipping Bucket + Bird Guard	McVan	87882

Data Acquisition and transmission:

Data Collection Unit (DCU) Almos AWS, S/N: 106953, Firmware Vers.: 1.0.0.96
Config.ini 2010/05/23 11:41 :54z

Eagle Board S/N: 7010 / 022

Anadig S S/N: 7138

Digital and Power Module S/N: 7032

Auxiliary Module: S/N: 4015

LCD Display S/N: 3036 / 2056

Data transmission 2 No. GPRS modem, Fasttrack M1208B-ON, Wavecom

Wataniya and Zain network access with SIM card

Power Supply Solar Panels (1)

Charge Controller **Plasmatronics PL20**

Backup Power Battery Pack of 2 solar batteries, 12V, 100Ah

Station Equipment History :

/Users/EssaRamadan/Desktop/Japan Workshop/AWOS META DATA/(A19) Kuwait City – 40581.docx

Air Temperature / relative humidity

01.01.2006 INSTALL

HMP45D S/N: A2920047

Wind direction and speed + clamp

01.01.2006 INSTALL

WAS425A S/N: A3420029

Rain - Tipping Bucket + Bird Guard

01.01.2006 INSTALL

Rimco 8500 S/N : 87882

Field Performance Checks: