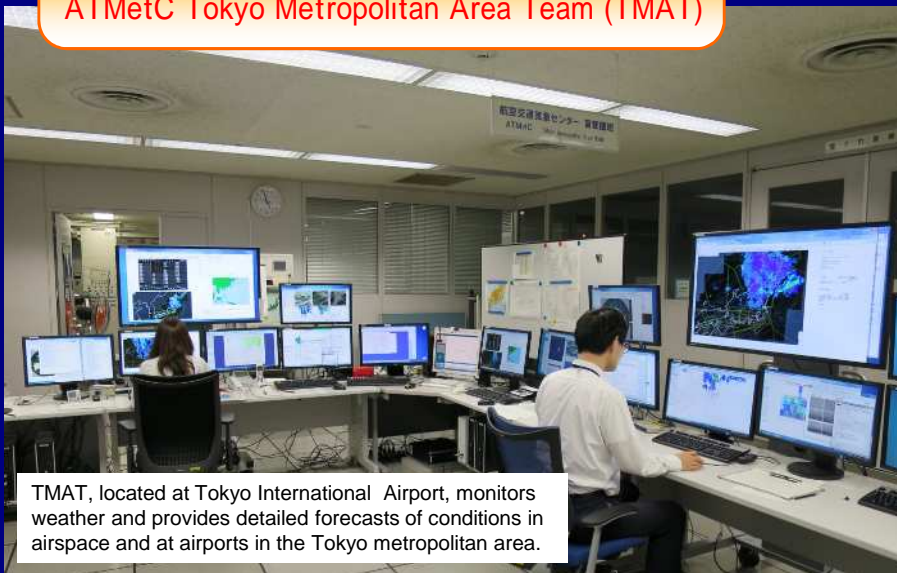


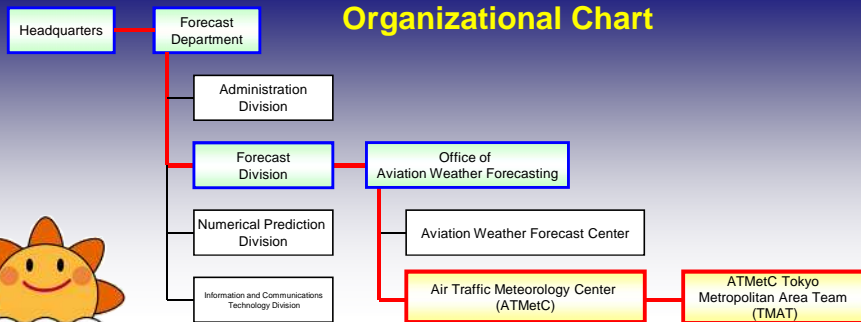
## ATMetC Tokyo Metropolitan Area Team (TMAT)



TMAT, located at Tokyo International Airport, monitors weather and provides detailed forecasts of conditions in airspace and at airports in the Tokyo metropolitan area.

- Oct. 2003 ATMetC preparatory office established within the Aeronautical Meteorology Division of the Administration Department.
- Apr. 2005 Duties of the ATMetC preparatory office transferred to the Forecast Division of the Forecast Department; office relocated to current site in Fukuoka.
- Jul. 2005 Office of Aviation Weather Forecasting established within the Forecast Division of the Forecast Department.  
ATMetC preparatory office placed under the Office of Aviation Weather Forecasting.
- Oct. 2005 ATMetC founded within the Office of Aviation Weather Forecasting; partial operation (briefing and other work) begun.
- Feb. 2006 All ATMetC operations in connection with initiation of full operation at the Air Traffic Management Center (ATMC; part of the Ministry of Land, Infrastructure, Transport and Tourism) begun.
- Apr. 2014 ATMetC Tokyo Metropolitan Area Team (TMAT) established at Tokyo International Airport; operation begun.

### Organizational Chart



Air Traffic Meteorology Center, Office of Aviation Weather Forecasting, Forecast Division, Forecast Department, Japan Meteorological Agency  
1302-17 Kosenuki nata Higashi-ku Fukuoka 811-0204, Japan

<http://www.jma.go.jp/jma/indexe.html>

March 2016



Japan Meteorological Agency

# Air Traffic Meteorology Center



Air Traffic Management Center  
Operation room  
Foreground:  
Meteorology Section

The Air Traffic Meteorology Center (ATMetC) supports the safety and efficiency of aircraft operation by providing meteorological information



The JMA mascot  
"Hareru"



## Air Traffic Meteorology Center (ATMetC)

Provision of meteorological information to support Air Traffic Management

As air traffic volumes increase, even congestion at a single airport or localized significant weather phenomena can affect air traffic nationwide.

Meteorological information on major airports and air routes is very important in Air Traffic Management (ATM).

ATMetC provides meteorological information to support ATM on a 24-hour basis.

Monitoring and forecasting significant weather at major airports and within air routes



ATMetC



Weather Briefing for ATM Officers

## Provision of Meteorological Information



Japan Civil Aviation Bureau  
ATM Officer  
ATM Information Officer  
ATM Engineering Officer



Sharing of information in meetings



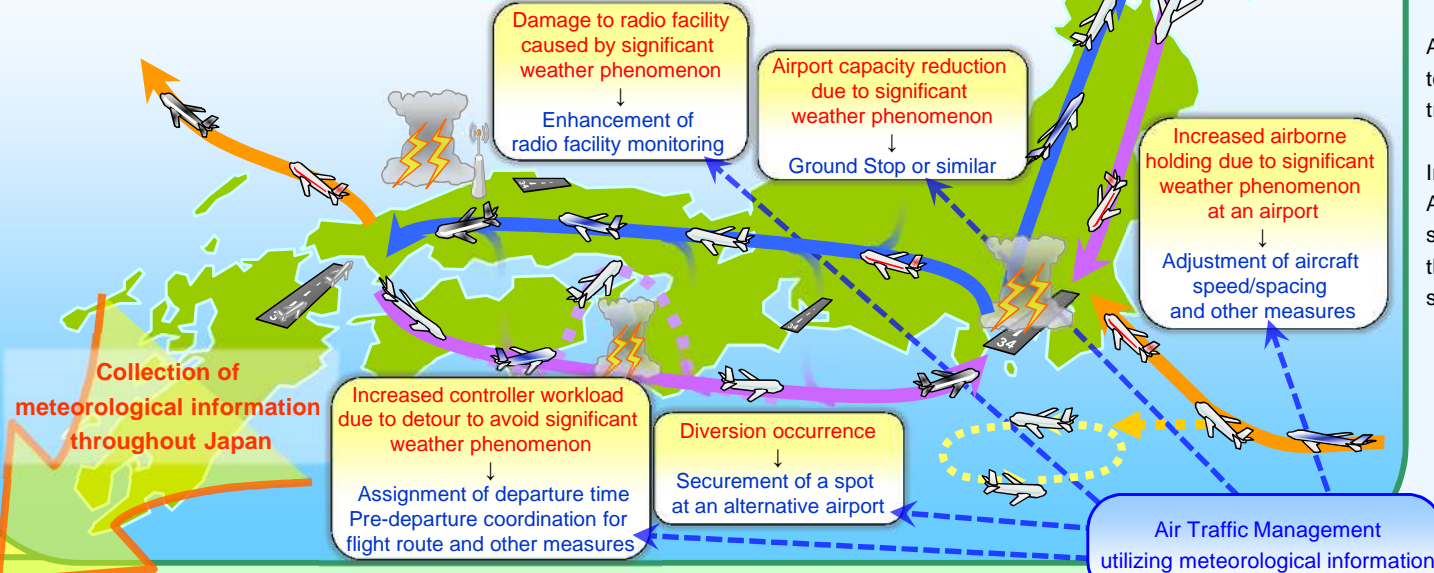
Ministry of Defense  
Liaison Officer

## ATMC Operation Room

International collaboration with related institutions from other countries

Collaboration with airlines

## Air Traffic Management utilizing Meteorological Information



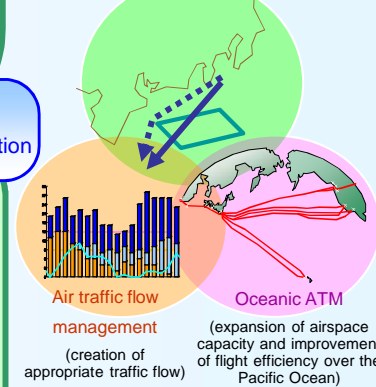
## Air Traffic Management Center (ATMC)

Centralized air traffic management throughout Japan

Air traffic volumes are increasing today due to rising demand for air travel/transportation.

In order to respond to this demand, ATMC works to ensure air traffic safety and improve flight efficiency via the integration of the three functions shown in the figure below.

Airspace management (effective airspace use)

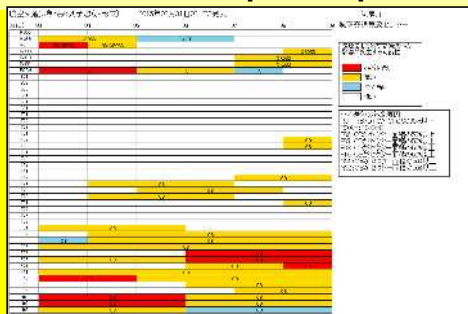


## Collaborative Decision Making (CDM)

It is important that all related parties share necessary information and make collaborative decisions in order to achieve ATM effectively and smoothly.

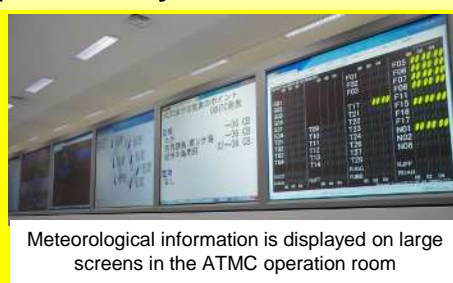
Personnel from the Civil Aviation Bureau, from Japan's Ministry of Defense and from the Japan Meteorological Agency work together in a single operation room.

## Examples of products provided by ATMetC



Air Traffic Meteorological category forecast

This product shows the area and time in relation to the probability of significant weather phenomena affecting ATM (probability: red > yellow > blue > white)



Meteorological information is displayed on large screens in the ATMC operation room

ATMetC provides precise information as necessary on significant weather phenomena such as thunderstorms, strong winds and heavy snow that may affect air traffic flow. The ATM officer conducts air traffic management in reference to this information, which is also shared via TV conferencing or similar channels with air traffic service providers, airlines and other related parties.

ATMC also shares information and collaborates with related overseas organizations and airlines for safe, efficient aircraft operation.