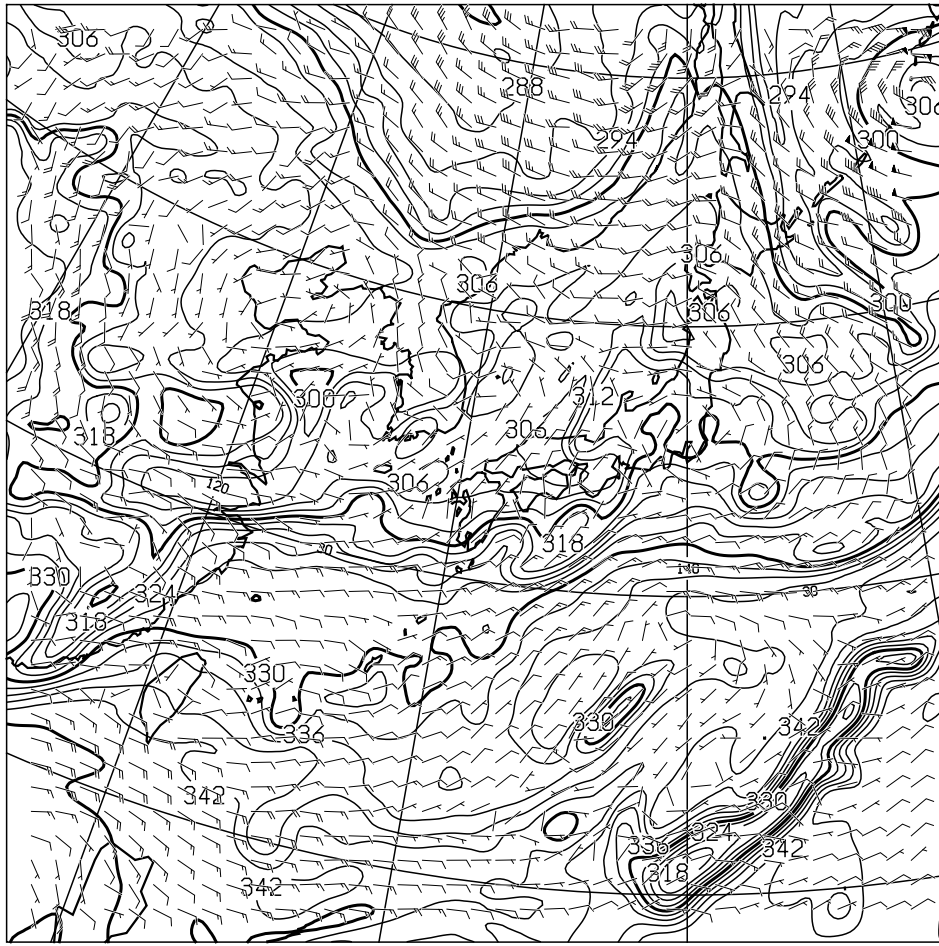
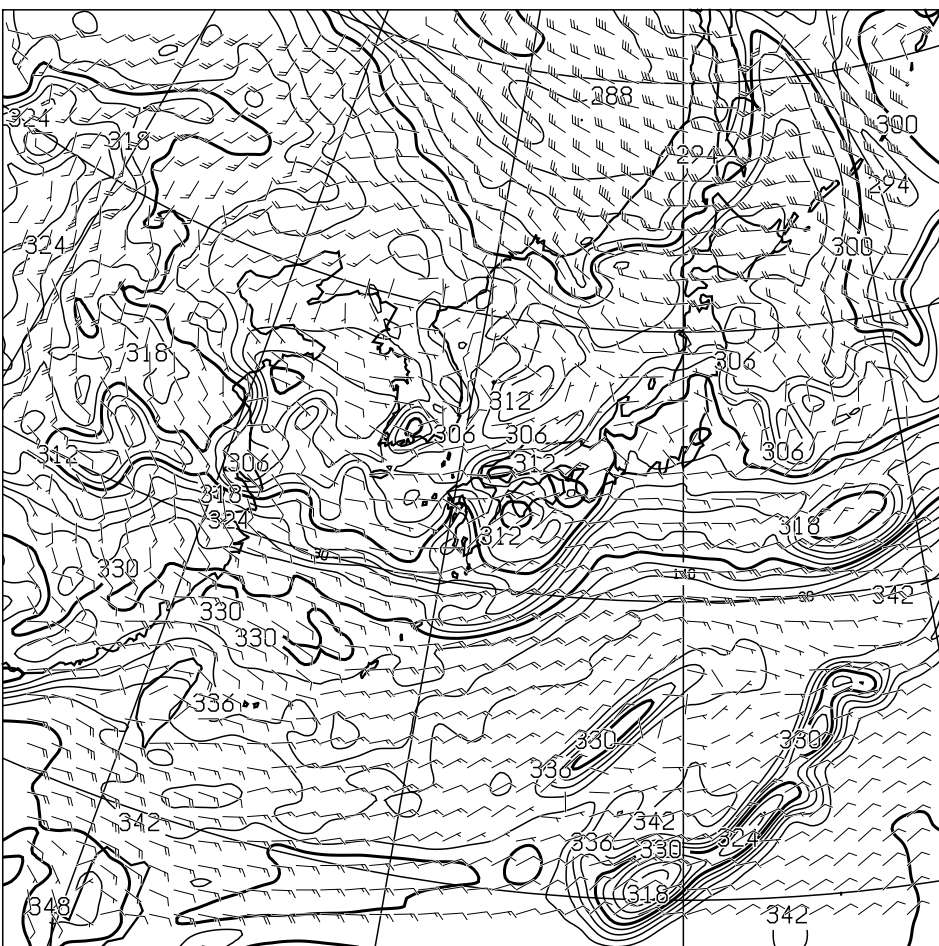


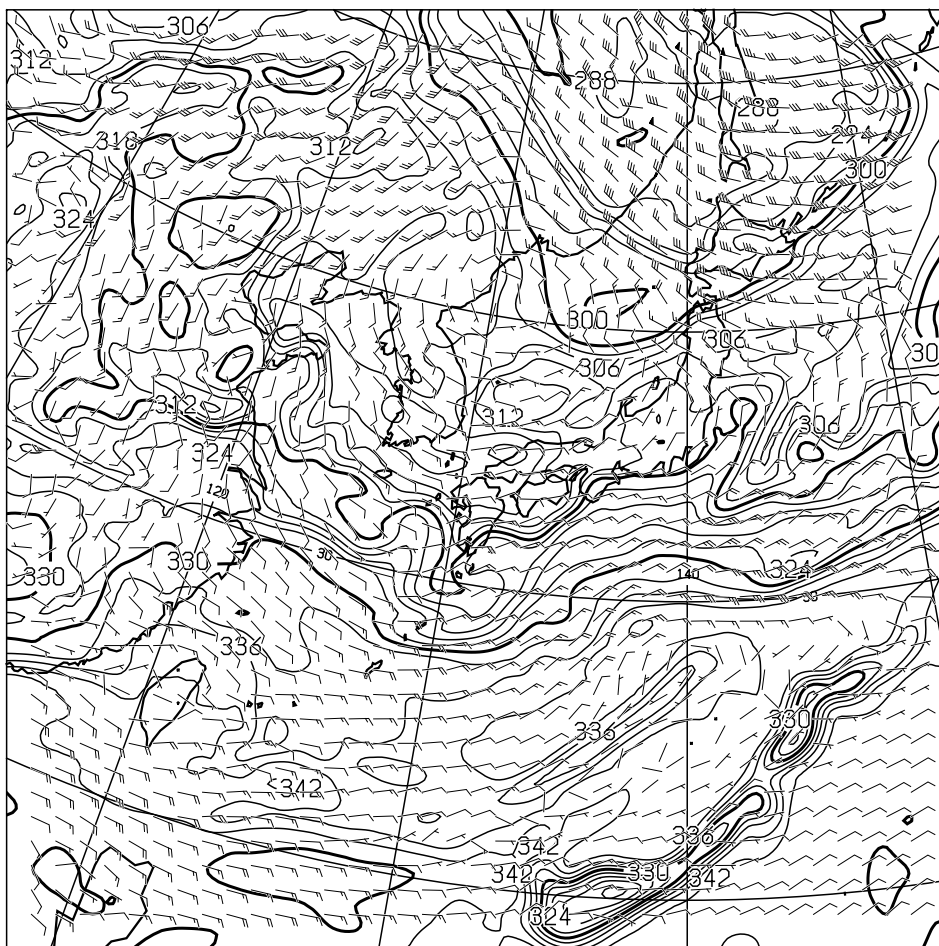
T=12 850hPa: E.P. TEMP(K), WIND(KNOTS) VALID 111200UTC



T=24 850hPa: E.P. TEMP(K), WIND(KNOTS) VALID 120000UTC



T=36 850hPa: E.P. TEMP(K), WIND(KNOTS) VALID 121200UTC



T=48 850hPa: E.P. TEMP(K), WIND(KNOTS) VALID 130000UTC

FXJP854 110000UTC OCT 2024

Japan Meteorological Agency