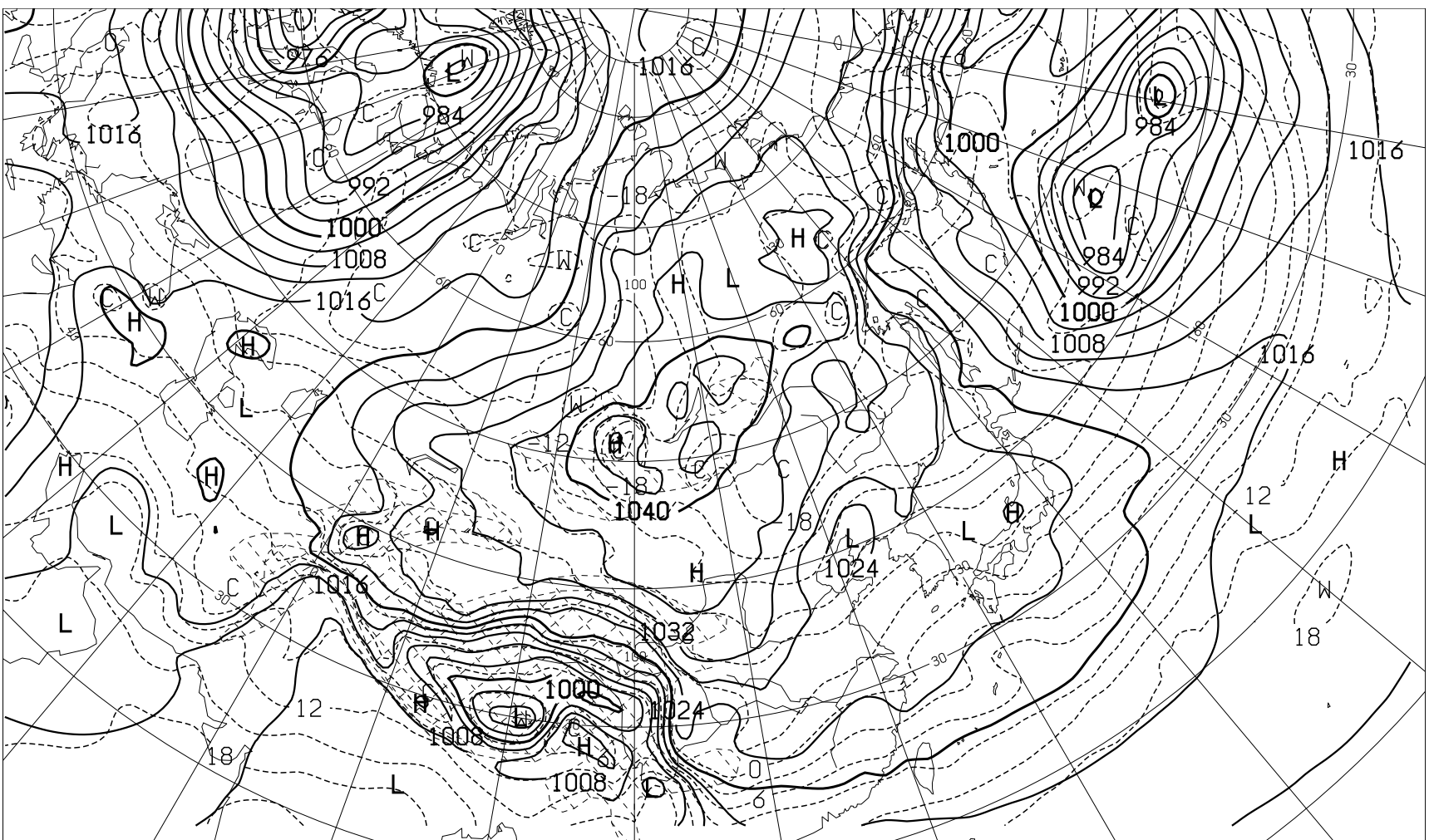


FEAS519 231200Z JAN 2022 HEIGHT(M), VORT(10**⁻⁶/SEC) AT 500hPa
 (VALID 311200Z JAN 2022)



FEAS19 231200Z JAN 2022 SURFACE PRESS(hPa) AND TEMP(C) AT 850hPa
 (VALID 311200Z JAN 2022)