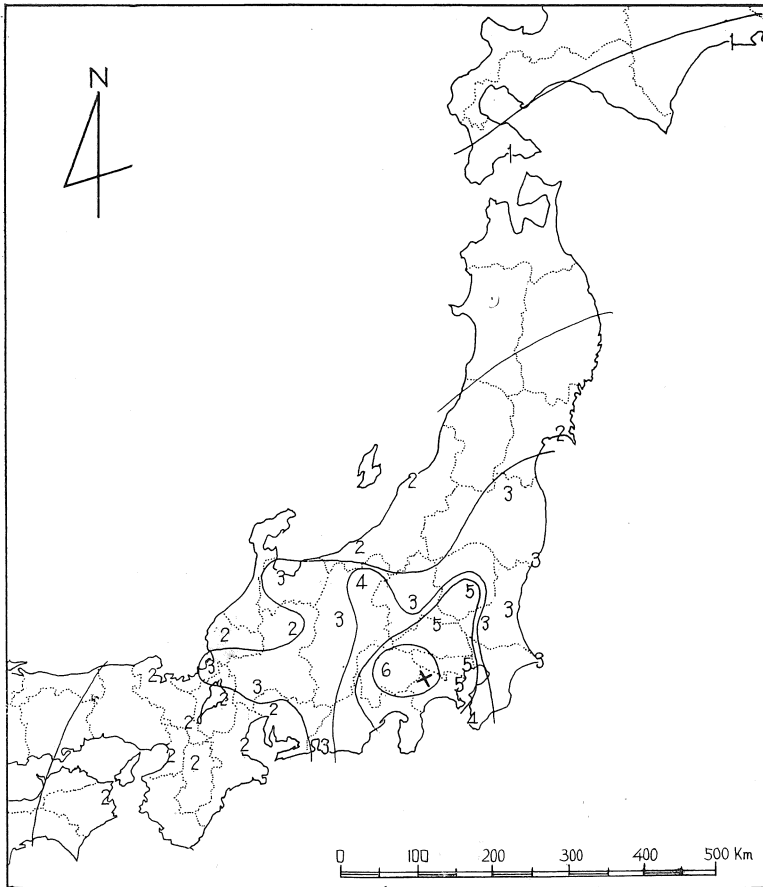


## 2. The Central Sagami Earthquake, 1924



(January 15th, 5:50  
 $35^{\circ}30'E$ ,  $139^{\circ}12'N$ ,  
 $r=450$  km,  $M=7.2$ )

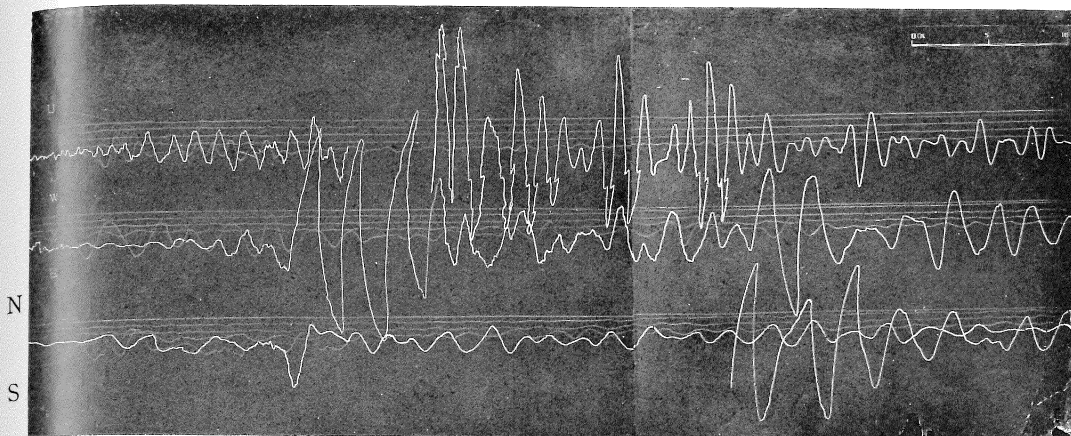
Bridges were damaged at 24 places in Tōkyo and 12 in Kanagawa Prefs. Damaged places of roads numbered 94 in Kanagawa Pref. Badly damaged places were involved in the Districts of Kōza, Naka, Kamakura and Aiko in Kanagawa Pref., Yokohama City and Minamitsuru District of Yamanashi Prefecture.

### Seismographs

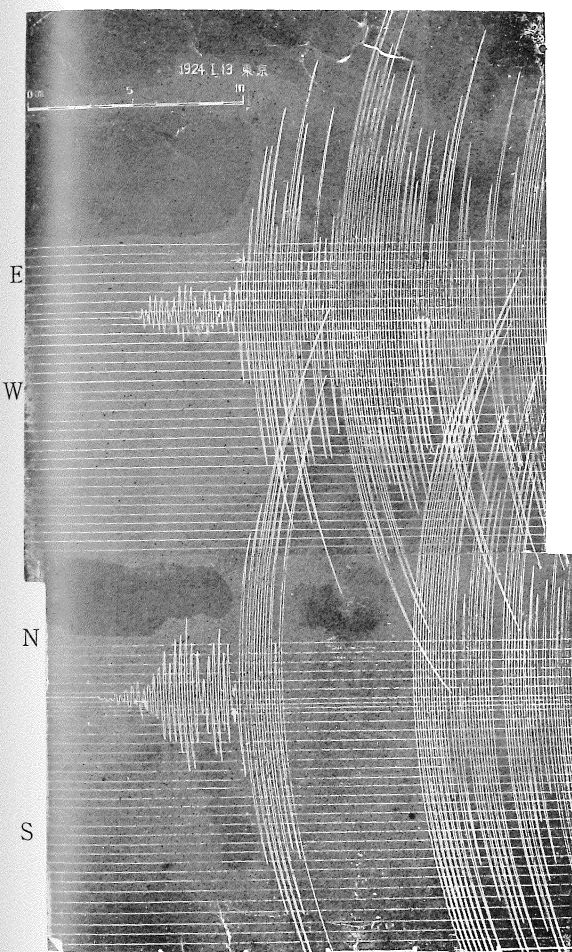
No of Fig.	Station	Int.	Inst.	Comp.	V	T	r	v	sp	No m. f.
1	Utsunomiya	V	M	{ H V	5 10	3 ca			—	127
2	Tōkyo	V	P(I)	H	50	4.5	0.009		38.5	—
3	Kumagaya	V	P(N)	{ H V	30	8.0	0.008 0.009		19.6	502
4	Nagano	IV	P(O)	{ N E	50	4.0 3.5	— 0.041		25.0	14

m: Shizuoka

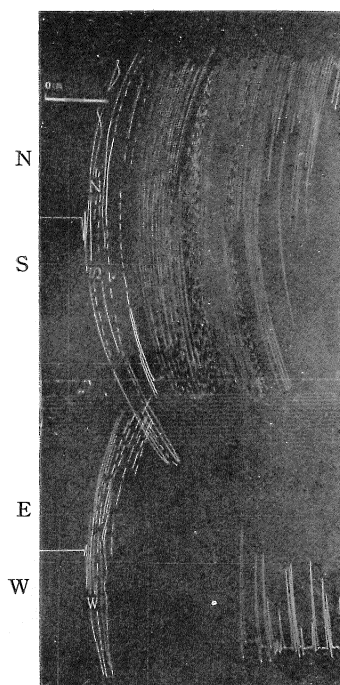
50  
 /N,  
 (7.2)  
 amag-  
 n Tō-  
 Kana-  
 aged  
 num-  
 gawa  
 aged  
 olved  
 f Ko-  
 kura  
 gawa  
 City  
 Dis-  
 nashi



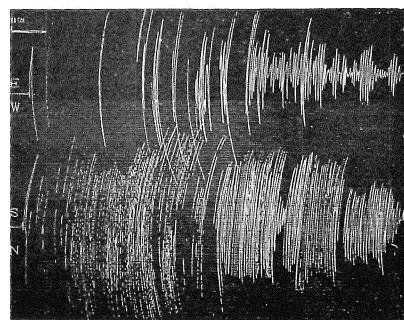
1. Utsunomiya (M)



2. Tōkyō (P) (×2 scale)



3. Kumagaya (P)



4. Nagano (P)

No.	f.
27	
—	
2	
4	