

1. The Kanto Earthquake, 1923

(September 1st, 11:58, 35°20'N, 139°20'E, r=700 km, M=7.9)

Towns near the epicentral region such as Odawara, Kōzu, Kamakura, Tateyama were shaken most severely. Some places experienced such high acceleration as 40-50% of g. while in down town of Tōkyō, 15-20%, and its upper town 10% in an average.

Seismogram showed the maximum displacement of 14-20 cm in double amplitude with period of about 1. sec. at Tōkyō University, Hongō.

Tsunami: Tsunamis occurred at Misaki, Kamakura, Atami, Ito, Mera, Izu Peninsula, and North coast of Oshima Island, the height attaining as high as 6 m at Misaki, and washing away many houses.

Fires accompanying the shock destroyed several large cities completely and brought the death-roll amounting to more than 90% of the total number.

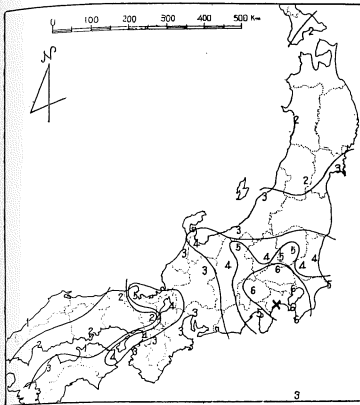


Table of damage

Prefecture	dead	injured	missed	houses				
				completely demolished	partly	burnt	Washed away	total
Kanagawa*	29,065	56,269	4,002	62,887	52,863	68,569	136	131,592
(Yokohama City)	23,440	42,053	3,183	11,615	7,992	58,981	—	70,596
(Yokosuka City)	540	982	125	8,300	2,550	3,500	—	11,800
Tokyo**	68,215	42,135	39,304	20,179	34,632	377,907	—	398,086
(Tokyo City)	59,065	15,674	1,055	3,886	4,230	366,262	—	370,148
Chiba	1,335	3,426	7	31,186	14,919	647	71	31,904
Saitama	316	497	95	9,268	7,577	—	—	9,268
Yamanashi	20	116	—	1,763	4,994	—	—	1,763
Shizuoka	375	1,243	68	2,298	10,219	5	661	2,964
Ibaragi	5	40	—	517	681	—	—	517
Nagano	—	—	—	45	176	—	—	45
Tochigi	—	3	—	16	2	—	—	16
Gumma	—	4	—	107	170	—	—	107
Total	99,331	103,733	43,476	128,266	126,233	447,128	868	576,262

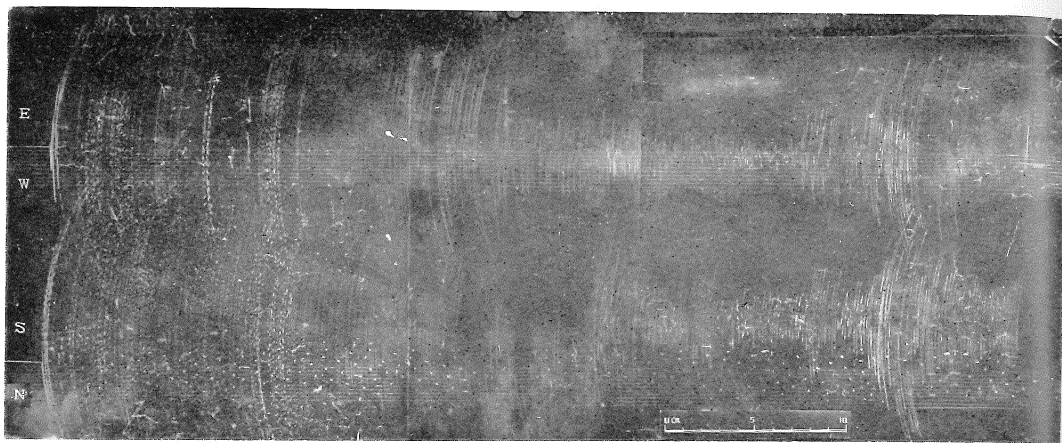
* Contain Yokohama and Yokosuka City. ** Contain Tokyo City.

Seismographs

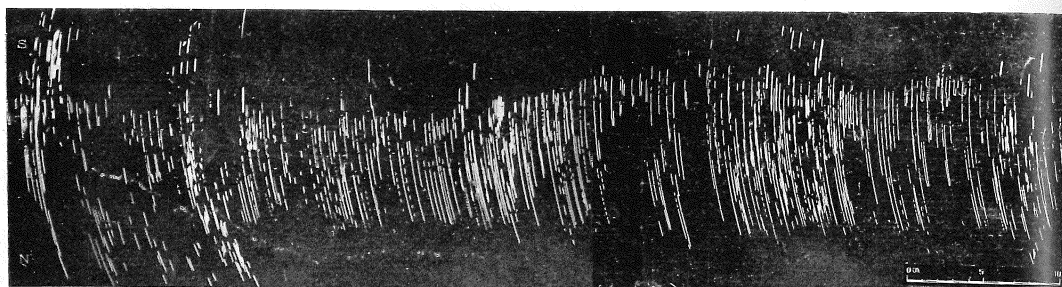
No of Fig.	Station	Jnt.	Ins.	Comp	V	T	r	v	ps	No m. f.
1	Nagano	V	P (O)	{ N	50	4.0	0.004		24.5	16
2	"		O	{ E	20	3.5				
3	"		M	{ N	2	18.0	0.016	2~3	—	20
4	Kumagaya	VI	M	{ H	2	3.5	0.004			
5	Tokushima	IV	S (I)	{ V	3	5.0	0.003	—	90cm	542
6	Hikone	IV	P (O)	{ H	5	3.0	—			
7	Osaka	IV	P (O)	{ V	10	3.0	—	—	—	8
8	Maebashi	IV	P (O)	{ H	2	4.4	2.7			
				{ V	2	5.1	3.7	—	15.7	279
				{ H	50	4.0	0.02			
				{ H	60	4.0	—	—	12.5	242
				{ H	100	4.1	—			
								—	13.1	545

m; Fushiki, Shizuoka, Utsunomiya, Matsumoto, Chōshi, Tokyo. d; Miyazu, kōfu.

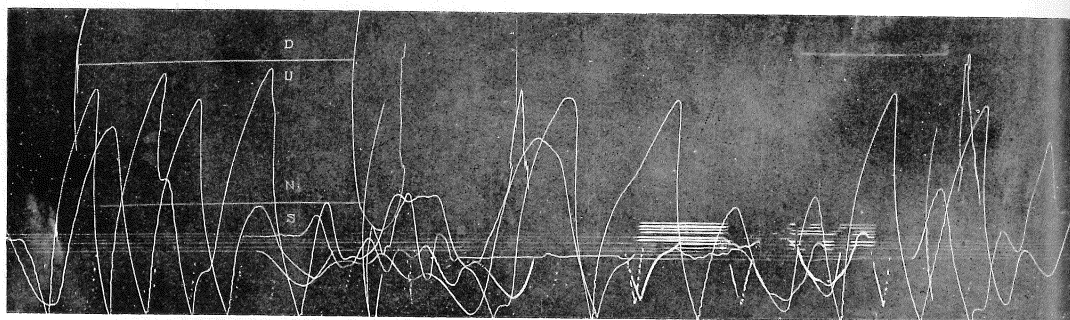
Remark; m stands for missing record, d for destroyed one by fire



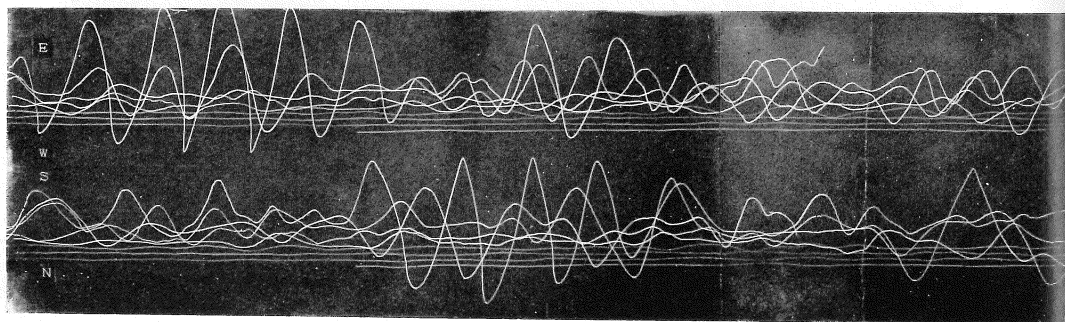
1. Nagano (P)



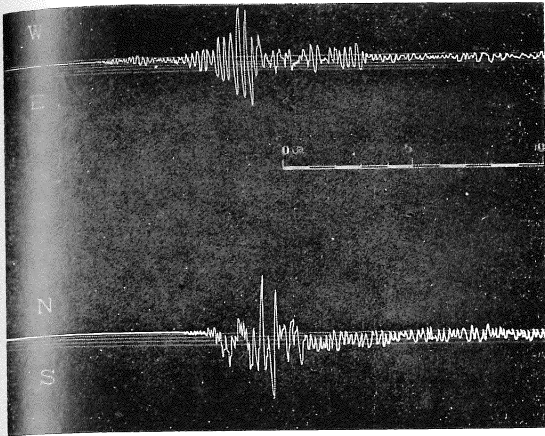
2. Nagano (ON)



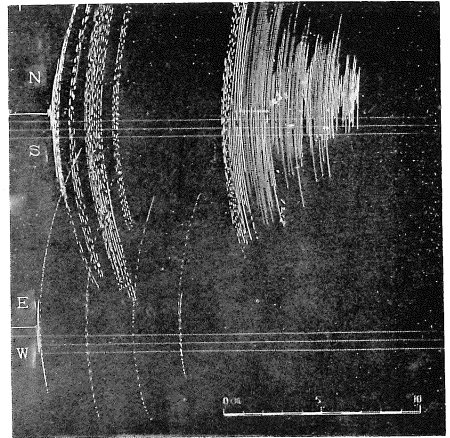
3. Nagano (M)



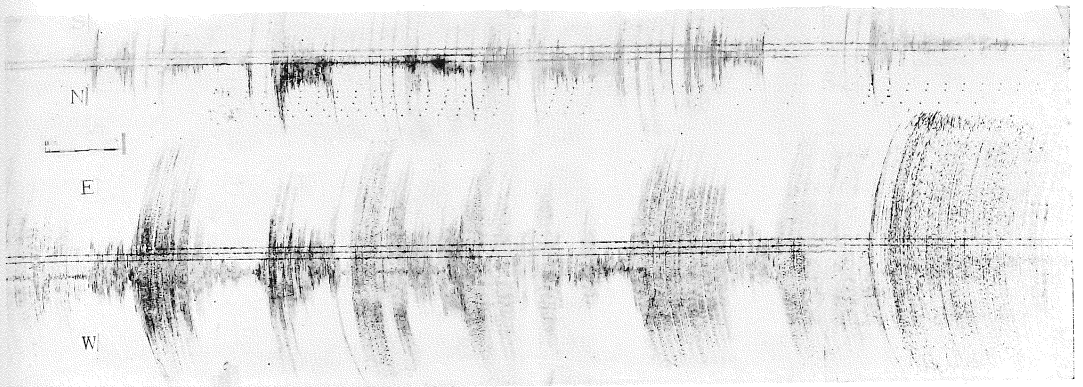
4. Kumagaya (M)



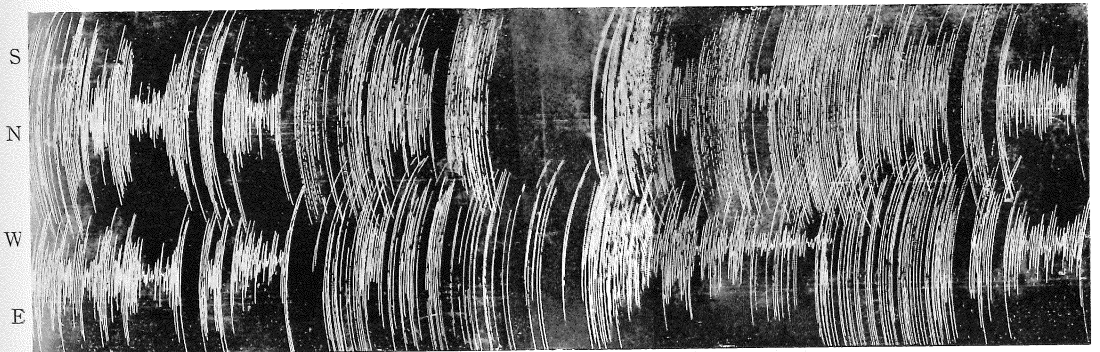
5. Tokushima (S)



6. Hikone (P)



7. Osaka (P)



8. Maebashi (P)