

News Release

Himawari-8 Conducts First Target Area Observation in Response to International User Request

17 October 2018

Japan Meteorological Agency (JMA)

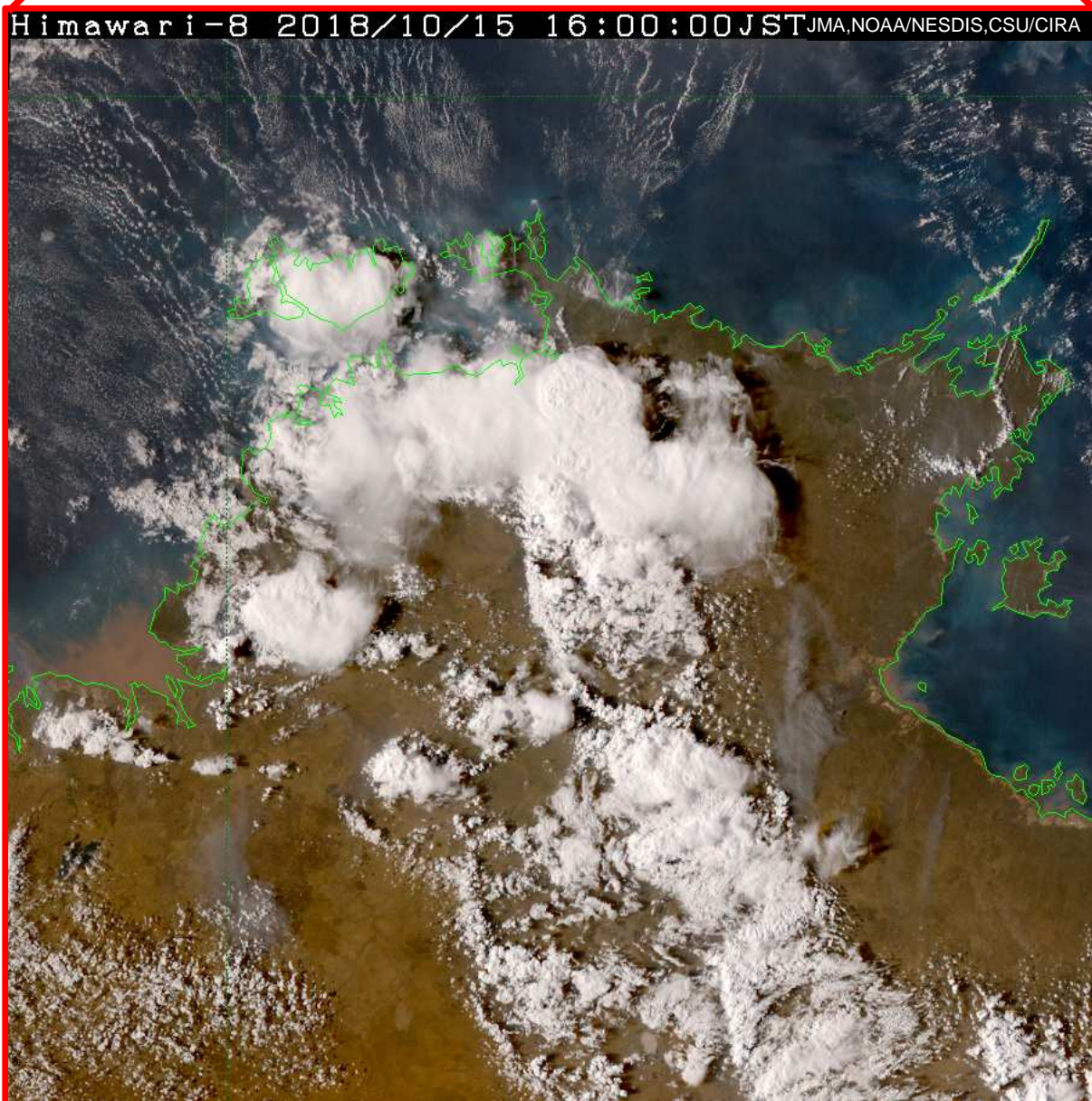
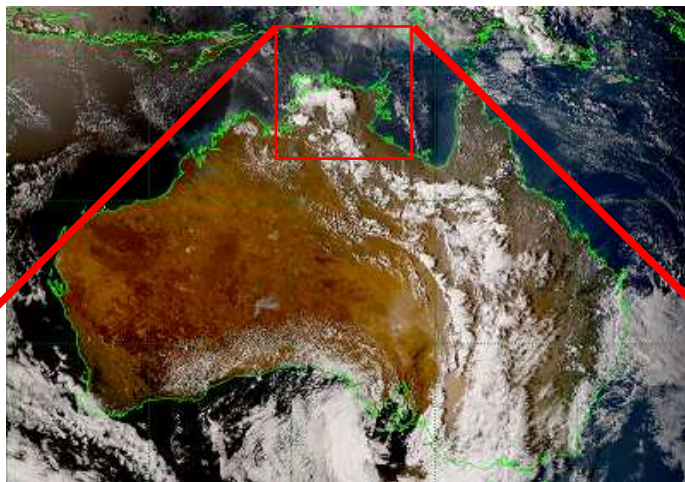
JMA's Himawari-8 meteorological satellite began conducting on-demand Target Area (TA) observation around Darwin in northern Australia at 06:30 UTC on 15 October 2018 in response to a request made by Australia's Bureau of Meteorology (BoM). This is the first operation of its kind to be performed under the new HimawariRequest service.

JMA launched the HimawariRequest service in January 2018 to provide National Meteorological and Hydrological Services (NMHSs) in WMO RA II and RA V with Himawari-8/9 on-demand TA-observation earth images taken every 2.5 minutes over an area of approximately 1,000 x 1,000 km within the Himawari observation domain. This imagery provides superior insight into extreme events such as tropical cyclones and volcanic eruptions.

(https://www.jma.go.jp/jma/jma-eng/satellite/news/himawari89/20180118_HimawariRequest.pdf)

This initial observation is intended to support monitoring of severe weather conditions associated with convective cloud activity around Darwin. The imagery data are provided to BoM on a real-time basis, and are additionally made available to all Himawari-8 users.

As of October 2018, JMA had received registrations from twelve NMHSs in Asia and Oceania, and opened the service to the nine whose preparations for request submission were complete. JMA expects the HimawariRequest service to support regional disaster risk reduction activities via the timely provision of detailed imagery on extreme events.



True Color Reproduction imagery taken at 07:00 UTC on 15 Oct. 2018 during Himawari-8 Target Area observation requested by Australia's Bureau of Meteorology.